

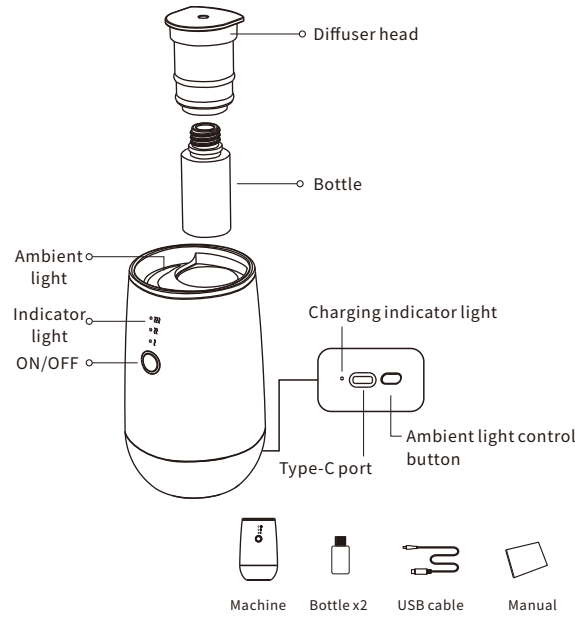
Product Manual



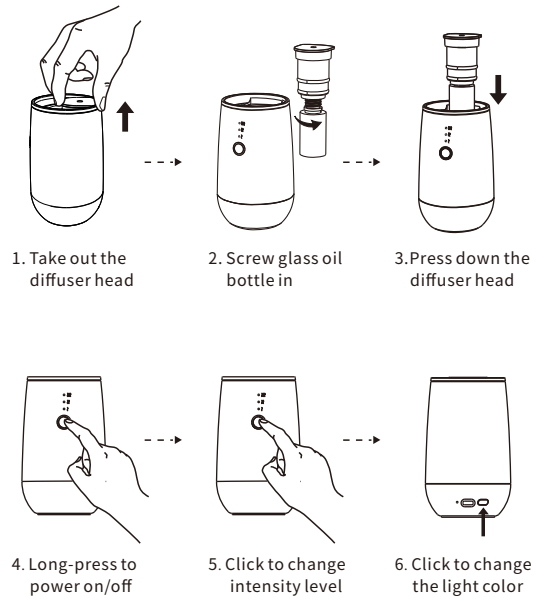
Brilliant Mini

Power: 3W	Input Voltage: 5V=0.6A	Net Weight: 10oz
Materials: ABS+PP	Coverage: 150 sq ft	Bottle:10ml
Dimension: 3" x 5"	Li-battery:2000mAh	

Product Description:



User Guide:



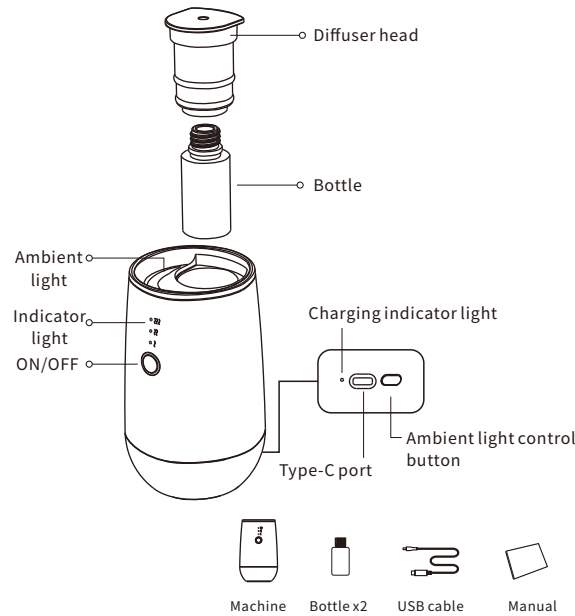
Product Manual



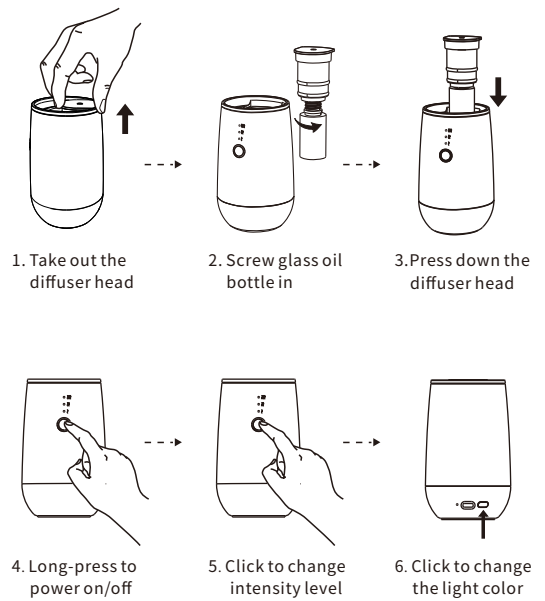
Brilliant Mini

Power: 3W	Input Voltage: 5V=0.6A	Net Weight: 10oz
Materials: ABS+PP	Coverage: 150 sq ft	Bottle:10ml
Dimension: 3" x 5"	Li-battery:2000mAh	

Product Description:



User Guide:



Useful Information:

Charging Instructions

Indicator Light: When the Brilliant Mini is charging, a red light will be visible. Once it's fully charged, the light turns green.

Note: This light can be found on the back of the diffuser.

Time to Charge: It takes about 4 hours to fully charge the diffuser. If the battery is completely dead, charge it for at least 5 minutes before using it again.

Battery Life: The Brilliant mini can work for about 24 hours on a full charge when used in G1 mode.

Automatic Shut-Off Feature

Inactivity Shut-Off: If you keeping using the diffuser for 3 hours, it will turn off automatically to save battery.

Diffuser Head and Ambient Light

Compatibility: The diffuser head fits most bottles that are 10 ml in size.
Ambient Light: You can change the color of the light or turn it off.

Operating the Brilliant Mini

Power Button: Press and hold to turn the diffuser on or off. Press briefly to switch between different modes.

Light Button: Press to change the color of the ambient light or to turn the light off.

Diffuser Intensity Levels

Level 1 - Light: Releases scent for 5 seconds and pauses for 2 minutes and 30 seconds.

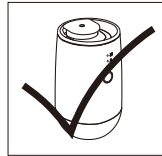
Level 2 - Medium: Releases scent for 10 seconds and pauses for 2 minutes.

Level 3 - Strong: Releases scent for 10 seconds and pauses for 1 minute.

Cautionary Notes:

- ⚠ Keep Vertical: Always position the Brilliant Mini upright. If it's tilted or laid flat, oil may spill and the diffuser's performance could decline.
- ⚠ No Unauthorized Repairs: Do not attempt to modify, dismantle, or fix the diffuser on your own. If it's not functioning properly, reach out to Brilliant Scents immediately.
- ⚠ Use Standard Charging: Avoid using a quick charger. Stick to the standard charging method provided.

Note: To prevent oil leakage and potential damage, make sure the Brilliant Mini is upright during operation.



Troubleshooting Guide:

Before asking to have the Diffuser repaired, please try to diagnose the problem first following to bellow instructions.

Breakdown	Solution
Not Diffusing	-Confirm that the tube is securely connected; tighten if loose.
Weak Diffusion	-Clean a blocked atomizing core.. -Verify the tube's connection; tighten if it appears loose.
Oil Leakage	-Tighten a loose bottle or replace it if needed.
Oil Spill	-Replace a damaged atomized head. -Keep the diffuser upright to prevent spills.
Abnormal Noise	-Check the air pump for looseness or damage; secure if loose.

Useful Information:

Charging Instructions

Indicator Light: When the Brilliant Mini is charging, a red light will be visible. Once it's fully charged, the light turns green.

Note: This light can be found on the back of the diffuser.

Time to Charge: It takes about 4 hours to fully charge the diffuser. If the battery is completely dead, charge it for at least 5 minutes before using it again.

Battery Life: The Brilliant mini can work for about 24 hours on a full charge when used in G1 mode.

Automatic Shut-Off Feature

Inactivity Shut-Off: If you keeping using the diffuser for 3 hours, it will turn off automatically to save battery.

Diffuser Head and Ambient Light

Compatibility: The diffuser head fits most bottles that are 10 ml in size.
Ambient Light: You can change the color of the light or turn it off.

Operating the Brilliant Mini

Power Button: Press and hold to turn the diffuser on or off. Press briefly to switch between different modes.

Light Button: Press to change the color of the ambient light or to turn the light off.

Diffuser Intensity Levels

Level 1 - Light: Releases scent for 5 seconds and pauses for 2 minutes and 30 seconds.

Level 2 - Medium: Releases scent for 10 seconds and pauses for 2 minutes.

Level 3 - Strong: Releases scent for 10 seconds and pauses for 1 minute.

Cautionary Notes:

- ⚠ Keep Vertical: Always position the Brilliant Mini upright. If it's tilted or laid flat, oil may spill and the diffuser's performance could decline.
- ⚠ No Unauthorized Repairs: Do not attempt to modify, dismantle, or fix the diffuser on your own. If it's not functioning properly, reach out to Brilliant Scents immediately.
- ⚠ Use Standard Charging: Avoid using a quick charger. Stick to the standard charging method provided.

Note: To prevent oil leakage and potential damage, make sure the Brilliant Mini is upright during operation.



Troubleshooting Guide:

Before asking to have the Diffuser repaired, please try to diagnose the problem first following to bellow instructions.

Breakdown	Solution
Not Diffusing	-Confirm that the tube is securely connected; tighten if loose.
Weak Diffusion	-Clean a blocked atomizing core.. -Verify the tube's connection; tighten if it appears loose.
Oil Leakage	-Tighten a loose bottle or replace it if needed.
Oil Spill	-Replace a damaged atomized head. -Keep the diffuser upright to prevent spills.
Abnormal Noise	-Check the air pump for looseness or damage; secure if loose.